


2019  
LEXUS BOUTIQUE  
C O L L E C T I O N





**MAKE A  
STATEMENT.**









# TABLE OF CONTENTS

Apparel	7
Headwear	16
Timepieces	20
Drinkware	22
Golf	28
Bags	30
Business & Accessories	36
Writing	40
Personal Touches	42
Lifestyle	46
Youth	54
Performance Zone	60



A man with a beard and short dark hair is wearing a black quilted jacket over a blue striped shirt. He is looking off to the side with a slight smile. The background is a blurred urban setting with a building and a window.

# STAND OUT IN ANY CROWD

Whether you're active, on vacation  
or behind the wheel, every detail in  
your Lexus Boutique is selected with  
you in mind.

7

---

A P P A R E L

---



**MEN'S AND LADIES' STORMTECH® DIAMONDBACK JACKET**

Men's 333929 Ladies' 333930

This high style diamond quilted jacket is lightweight and thermal filled to keep you warm. Water-resistant jacket features snap button chest pockets and curved back hem for casual wear. Lexus logo on back of neck.

Men's M - 2XL Ladies' S - XL

**MSRP: \$114.95**

The background of the image is a dark, high-contrast photograph of a car's rear. A prominent feature is the rear light assembly, which is illuminated with a bright red light, creating a strong focal point. The car's body panels are dark and sleek, with some highlights suggesting a metallic or polished finish. The overall mood is sophisticated and modern.

# STYLE

Performance inspired. Sleek. A technically sound jacket made with comfort and cutting edge style.





**MEN'S STORMTECH® REFLEX  
HOODY**

333936

Urban athletic design with technical features, perfect for pre or post workout. The Reflex Hoody includes performance inspired H2X-DRY® fabric that wicks moisture away from the skin to help regulate optimal body temperature.

M - 2XL

**MSRP: \$89.95**

APPAREL



A



B



C

**A. MEN'S AND LADIES' UNDER ARMOUR® DOUBLE THREAT HOODY**

333938 Men's M - 2XL

333939 Ladies' S - XL

Full cut for complete comfort, the Under Armour® fleece is light, breathable and stretches for superior mobility while repelling water without sacrificing breathability. Soft inner layer traps heat to keep you warm and comfortable. Front pocket with right-side internal phone pocket. 100% Polyester. \*

**MSRP: \$75.00**

---

Comfort, style and of course performance. Selected for Lexus owners.

---

**B. LADIES' SUNICE SUPERLIGHT FULL ZIP**

302198

This form-flattering full-zip jacket makes a smart, highly breathable performance layer on cool and windy days.

S - XL

**MSRP: \$129.95**

**C. MEN'S LIGHTWEIGHT PERFORMANCE CONTRAST JACKET**

302199

Tricot fleece with mock neck lining. Contrasting colour piping at top edge of collar. Long sleeves with 2" turned under cuffs. Extended sport hem with contrasting colour interior hem. 100% polyester bonded with 100% polyester mesh.

M - 2XL

**MSRP: \$115.75**

**D. MEN'S ROOTS® MIX HOODY**

302191

This hoody is constructed with a cotton, polysuede washed fleece to provide extra comfort on cool days or chilly evenings. Features Roots73® branding on the hood, sleeve, hip and drawstrings.

This classic monochrome hoody proves that understated style can make a statement.

M - 2XL

**MSRP: \$119.95**



D

\* Inventory for Under Armour® items is subject to availability throughout the year.



APPAREL



A



B



C



D

**A. MEN'S UNDER ARMOUR®  
PLAYOFF POLO**

333940

Soft anti-pill fabric with snag free finish. Classic polo with 4-way stretch construction. Anti-odour and moisture wicking fabric with UPF 30+ to protect you from harmful rays. \*

M - 2XL

**MSRP: \$87.75****B. MEN'S UNDER ARMOUR®  
QUALIFIER 1/4 ZIP**

302193

Soft and durable circular knit construction with brushed interior for extra warmth. Reflective 1/4 zip for visibility during after-hours training. 100% polyester.\*

M - 2XL

**MSRP: \$99.95****C. MEN'S UNDER ARMOUR®  
LONG SLEEVE LOCKER TEE**

333937

Has an ultra-soft, more natural feel for unrivaled comfort. Signature moisture transport system wicks away sweat from the body. Re-engineered athletic fit with lightweight stretch construction improves mobility for range of motion. Classic ribbed crew neck. 100% polyester. Logo on right shoulder.\*

M - 2XL

**MSRP: \$55.00****D. MEN'S PERFORMANCE  
CONTRAST POLO**

302150

Anti-snag and anti-bacterial with contrasting colour under placket and contrasting colour stitching along shoulder yokes and contour panels. 100% polyester.

M - 2XL

**MSRP: \$42.50****E. MEN'S MARMOT®  
HARRIER QUARTER ZIP  
PULLOVER**

333941

The Harrier Quarter Zip is an athletic-fitting base layer that won't disappoint. Made with wicking and drying polyester to keep you dry. Stretches for lots of mobility, this piece has flat-locked seams for against-the-skin comfort while moving.

M - 2XL

**MSRP: \$75.00**


---

Classic look or athletic fit... it's everything you need for light-weight apparel.

---



E

\* Inventory for Under Armour® items is subject to availability throughout the year.



**LADIES' V-NECK RHINESTONE T-SHIRT**

301951

Super soft cotton blend tee is designed to fit to your body shape comfortably. 95% ringspun cotton, 5% spandex.

S-XL

**MSRP: \$37.50**



**LADIES' LACOSTE® V-NECK**

**TEE** 301981

100% cotton jersey. An essential T-shirt in soft pima cotton, finished with Lacoste's signature Croc logo.

S - XL

**MSRP: \$69.95**





**LEXUS**  
**NX**

REFLECT WHAT DRIVES YOU.

Offering refined ride comfort, a luxurious interior, standard LSS+ safety features and sculpted exterior lines, the 2018 NX is as bold and uncompromising as those who drive it.



# 16

---

## HEADWEAR

---



### **FLEXFIT DELTA® SEAMLESS CAP**

333943

This cap is lighter, sleeker, smarter. Features a seamless stitch free construction and moisture wicking technology. S/M, L/XL

**MSRP: \$29.95**



**NEW ERA® MESH CAP**

267416

6 panel stretch fit cap with elasticized band and taping on inside seams.

Adult sizes: S/M (6 7/8 to 7 1/4),  
M/L (7 1/8 to 7 5/8), L/XL (7 1/2 to 8).

**MSRP: \$26.95**



**PREMIUM CAP WITH MESH ACCENT**

302224

6 section cap with structured front. Matching mesh insert on peak with contrasting colour underneath. All over pro-stitch with matching tab Velcro® closure.

95% polyester/5% cotton.

**MSRP: \$25.75**



**NEW ERA® CAP**

267415

Stretch fit with elasticized band. NEW ERA® taping on inside seams. 100% polyester.

Adult sizes: S/M (6 7/8 to 7 1/4),  
M/L (7 1/8 to 7 5/8),  
L/XL (7 1/2 to 8).

**MSRP: \$32.95**



**AHEAD® PERFORMANCE GOLF CAP**

288287

Polyester knit with Velcro® tab featuring Mid-Fit, Dry Fit, UV protection technology. 100% polyester.

**MSRP: \$29.95**



## HEADWEAR



### UNDER ARMOUR® ADJUSTABLE CHINO CAP

302225

Unstructured crown. Built-in HeatGear® sweatband wicks away sweat to keep you cool & dry. Adjustable closure in the back. 100% cotton. \*

**MSRP: \$39.95**



### NIKE® LEGACY 91 TECH CAP

302345

Offers sweat-wicking, personalized comfort. Dri-FIT ripstop polyester provides ultimate lightweight comfort and breathability. One hand quick adjustable closure. One size fits most.

**MSRP: \$35.50**



### LEXUS LIQUID METAL CAP

163004

Premium cotton twill cap with liquid metal Lexus logo on front. Adjustable self back strap. One size fits most.

**MSRP: \$22.50**



### OAKLEY® CAP

267414

97% cotton / 3% elastane.

Slightly curved brim with padded sweatband wicks away moisture for a comfortable fit. Embroidered eyelet vents provide breathability.

Sizes: S/M, M/L

**MSRP: \$39.95**

\* Inventory for Under Armour® items is subject to availability throughout the year.

Note: this jacket is not available for purchase in the Lexus Boutique.

### **CABLE KNIT BEANIE WITH FAUX FUR POM POM**

333944

With a faux fur pompom accent on top, the cable knit beanie makes the ultimate statement in winter fashion. The lush pompom will attract the attention of everyone you meet while keeping you warm. Sold during winter months only.

**MSRP: \$27.95**

# 20

---

## TIMEPIECES

---



### MEN'S EMPORIO ARMANI WATCH

302372

Fashion meets function with this chronograph watch from Emporio Armani. The stainless steel case features a black dial and a date window for added functionality. The 3-link stainless steel bracelet adds the finishing touch. 43MM.

**MSRP: \$450.00**



## TIMEPIECES



**LADIES' EMPORIO ARMANI WATCH**  
302378

This elegant Emporio Armani timepiece features a white mother-of-pearl dial on a polished stainless steel case and bracelet. 32MM.

**MSRP: \$400.00**



**LADIES' MICHAEL KORS WATCH**  
302380

A monochrome masterpiece with a polished all-black finish with shimmering gold-tone. This larger bold piece is the epitome of chic. 42MM. Lexus logo laser engraved on back case.

**MSRP: \$275.00**



**GEN 4 SMARTWATCH - Q EXPLORIST**  
334462


Fossil® watch features activity tracking and built-in fitness tracker.

*Notifications:* text, email, social media, app alerts, multiple time zones, alarm clock, calendar alerts

*Functions:* heart rate tracking, GPS, NFC, swimproof, notifications, personalize your dial, control your music. Lexus logo on back case.

**MSRP: \$345.95**

Note: All watch models are subject to change throughout the year based on availability.



22

---

D R I N K W A R E

---

S'well®

**HOT OR COLD,  
WITHOUT THE  
SWEAT.**

**S'WELL® - 17 OZ.**

334229

Triple-walled Therma S'well® technology, which includes a copper layer and creates a condensation-free exterior that won't sweat on your hands or in your bag. Drinks stay cold for up to 24 hours, and hot for 12 hours. Made of vacuum insulated high-grade 18/8 stainless steel, durable to the core with no-stain interiors and tough exteriors. Fits perfectly into a standard-sized cup holder. .

**MSRP: \$45.00**



**H2GO™ TRAVEL TUMBLER - 20 OZ.**

333961

Powder coated double walled stainless steel thermal tumbler with copper vacuum insulation and threaded snap-fit lid.

**MSRP: \$35.95**



**BALI BAMBOO GLASS BOTTLE - 25 OZ.**

316781

Glass bottle with bamboo lid provides a stylish and purer drinking experience. Silicone protects and acts as a grip. Screw-top lid has a built-in, adjustable carry loop for on-the-go use. Wide mouth opening is ideal for adding ice cubes.

**MSRP: \$29.95**



**ALEX® BOTTLE - 26 OZ.**

333965

Beautifully strong bottle that is perfect for any drink. Moonlights as a shaker to mix up your favourite drink. BPA free and dishwasher safe. ALEX® logo on side band of bottle.

**MSRP: \$52.95**

# MAGICAL INVENTIONS BY MAGISSO



B

Please allow 3-4 weeks for delivery.



## A. MAGISSO CARAFE

333962

This one liter carafe in awarded dishwasher safe cooling ceramics keeps drinks cold all night long. Simply soak the ceramic in water for a couple of minutes to begin the cooling process. You can also personalize it with a touch of your own chalk and creativity.

**MSRP: \$98.95**

## B. MAGISSO COOLER

333963

This single bottle cooler in awarded dishwasher safe cooling ceramics will keep a bottle cool for hours. Simply soak the ceramic in water for a couple of minutes to begin the cooling process. You can also personalize it with a touch of your own chalk and creativity..

**MSRP: \$112.95**



## DRINKWARE



### **SPORT BOTTLE 28 OZ.**

227507

Bold, geometric design. Lid features handle and flip up straw. Tritan material is shatter, stain and odour resistant. BPA free.

**MSRP: \$14.95**



### **HOT & COLD TRAVEL BOTTLE 15 OZ.**

267451

Style, durability and a sleek matte finish.

Drinks remains cold for up to 24 hours, and hot for up to 8 hours.

Handwash only. Gift boxed.

**MSRP: \$32.50**



### **MINI SPORT BOTTLE WITH HIDEAWAY CARRY STRAP - 12 OZ.**

316778

Ideal for all outdoor activity. Double walled, stainless steel with vacuum insulation and has an inner wall plated with copper for ultimate conductivity to keep drinks hot for up to 8 hours and cold for up to 48 hours. Screw-on lid with built-in silicone carry strap. Wide mouth opening for easy cleaning and filling.

**MSRP: \$24.50**



### **CONTIGO® THERMAL BOTTLE - 20 OZ.**

267455

Stainless steel water bottle keeps drinks cold for up to 24 hours and hot for up to 10 hours! Leak proof and includes a convenient carry handle that makes for easy on-the-go transport.

**MSRP: \$29.95**



### **THOR COPPER BOTTLE - 22 OZ.**

316775

Durable, double-walled, stainless steel vacuum construction with copper insulation which allows your beverage to stay cold for up to 48 hours and hot for up to 12 hours. The construction also prevents condensation on the outside of the bottle. Features stainless steel screw-on, spill-resistant lid with durable stainless steel hand loop. Wide opening for comfortable filling and pouring. Perfect for ice cubes.

**MSRP: \$29.95**



**BISTRO 3-TONE MUG - 16 OZ.**

333968

Shake up your morning joe with the Bistro 3-tone mug. The ceramic mug utilizes the colours of today's décor with a complementing inner glaze and contrasting rim in the classic bistro coffee cup shape.

**MSRP: \$9.95**



**COPPER VACUUM TUMBLER AND CAN INSULATOR - 16 OZ.**

302429

Enjoy a beverage by drinking through the screw-on, slide open lid, or place a 12 oz. can inside the tumbler fixed with the interchangeable, rubberized ring. Durable, double-wall stainless steel vacuum construction with copper insulation, which allows your beverage to stay cold for 24 hours and hot for at least 8 hours.

**MSRP: \$27.50**



**CUTTER & BUCK® TRAVEL MUG - 16 OZ.**

162986

Double wall, stainless travel mug with screw on lid. Includes 1-piece Cutter & Buck® gift box.

**MSRP: \$29.95**

# A TINY STAR FOR COFFEE ENTHUSIASTS

Fantastic & fashionable  
mini coffee maker.

## **STARESSO® COFFEE MAKER**

333966

All-in-one portable espresso maker with built-in water chamber that also functions as milk frother for cappuccinos and lattes. The Starezzo® can make the perfect brew in minutes rather than hours. Easy to use and simple to clean.

**MSRP: \$99.95**



28

---

G O L F

---

# TEE TO GREEN PERFORMANCE





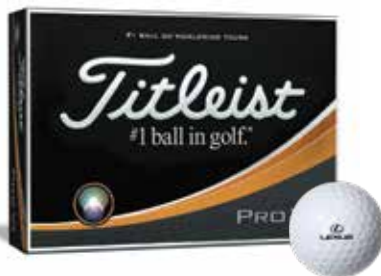


**TAYLORMADE® LIGHTWEIGHT STAND BAG**

288292

With a four-way top, 4-point shoulder strap and an anti-split stand system. 5 pockets include garment, rangefinder, accessories and water bottle pockets. Weight: 4.5lbs.

**MSRP: \$169.95**



**TITLEIST® PRO V1 GOLF BALLS**

333985

Designed for all golfers seeking to shoot lower scores, the new Titleist® Pro V1 features a new patented cover formulation that delivers more short-game spin and control with an even softer feel. Combined with its already exceptional distance, long-lasting durability, unmatched consistency, penetrating trajectory, and low driver spin, the new Titleist® Pro V1 provides the best fit for all golfers. Box of 1 dozen.

**MSRP: \$64.99**



**TAYLORMADE® TP5 GOLF BALLS**

302438

5 layers, zero compromises. REACT® Core - promotes fast speed off the driver and soft feel throughout the bag. 50% softer SpinMantle™ Technology - inner layers designed to promote consistent approach shot spin. SOFT TECH™ cast urethane cover. Box of 1 dozen.

**MSRP: \$69.95**

A man with dark curly hair and glasses, wearing a grey suit, is walking away from the camera on a city street. He is carrying a black bag. To his right is the rear of a silver car, which has a "SPORT" badge on the trunk. The background shows a city street with buildings and trees.

30

B A G S



**BUGATTI® LEATHER DUFFEL BAG**

303996

An ideal bag for your weekend getaways. Features an inside zippered accessory pocket and side pockets for quick access. Smooth leather handles. Decorated with a signature buckle, adjustable and removable padded tangle-free shoulder strap. Lexus logo on center front. Dimensions: 19.75" x 10" x 8.75"

**MSRP: \$325.95**



**SAMSONITE® XENON 3.0  
SPINNER MOBILE OFFICE  
TRAVEL CASE**

314704

Samsonite® travel case can be used as a carry-on and overnight bag. Includes an internal storage area to stow away your clothing, zippered main compartment which provides accordion-style

storage for your accessories or files, front zippered pocket with multi-function organizer, a laptop pocket (sized to fit up to a 15.6" laptop), a tablet pocket (sized to fit up to a 10" tablet), top padded grab handle and retractable handle for easy mobility (handle length when extended: 25"). SmartSleeve™ slides over upright handles for easy mobility and four 360 degree spinner wheels allow for easy transport on any surface. Can be opened 180 degrees to lay flat. Dimensions: 16.25" W x 7.25" L x 13.25" H

**MSRP: \$329.95**



BAGS



A



B



C



D



**A. STORMTECH® ATLANTIS  
WATERPROOF GEAR BAG**

333972

Constructed for maximum durability and versatility, this waterproof gear bag is designed to keep your contents safe and dry. Heavy duty with adjustable shoulder straps that let you carry the bag as a backpack. Dimensions: 24" x 15" x 15".

**MSRP: \$69.95**

---

**Bags constructed  
for durability and  
versatility.**

---

**B. OAKLEY® LINK BACKPACK**

302349

This nylon ripstop, and nailhead polyester backpack has active-adaptable harness. Tarp-lined side pocket and dedicated shoe compartment.

Dimensions: 12" x 12" x 8.5".

**MSRP: \$149.95**

**C. ZIPPERED CONVENTION TOTE**

302550

Zippered main compartment with Velcro® closure on front slash pocket. Phone and organizational pockets run along the base of the tote including a pen slot. D-ring and added corner detail to hang keys or water bottle. Dimensions: 16" X 5.5" X 16.5"

**MSRP: \$9.95**

**D. HEATHERED DRAWSTRING BAG**

302548

This light weight drawstring sports bag features thicker drawcord for added comfort and double drawstring closure. Decorated with a shiny imprint.

Dimensions: 14" X 16.5"

**MSRP: \$12.95**

**E. STORMTECH® MISTRAL  
RUCKSACK**

333969

Designed for comfort, this modern rucksack is built with padded shoulder straps, a diagonally cut front pocket for easy access to extra storage and ample internal space to fit almost anything.

Dimensions: 13.5" x 6.5" x 17.5".

**MSRP: \$69.95**





THE FIRST-EVER  
**LC 500**

BREATHTAKING BEAUTY,  
PURE PERFORMANCE.

 LEXUS  
EXPERIENCE AMAZING





36

---

B U S I N E S S   &   A C C E S S O R I E S

---



LEXUS BOUTIQUE



---

Helps keep your keys  
in excellent condition.

---



**LEATHER KEY FOB  
GENERATION 3**

333973

Proudly sport the Lexus brand with  
this black 100% leather key fob.

**MSRP: \$12.50**



**LEATHER KEY FOB,  
GENERATION 2**

163145

Proudly sport the Lexus brand with  
this black 100% leather key fob.

**MSRP: \$12.50**



**LEATHER KEY FOB,  
GENERATION 1**

155016

Proudly sport the Lexus brand with  
this black 100% leather key fob.

**MSRP: \$12.50**



**46" COMPACT UMBRELLA**

302471

Opens and closes automatically with the push of a button. Reflective trim for added safety and optimal visibility at night. Features pongee material and windproof design. Matching zippered sleeve included. Ergonomic black handle with wrist strap.

**MSRP: \$75.50**

**48" INVERTED UMBRELLA**

288353

Arc inverted style umbrella. Straight rubberized finger grip handle.

Revolutionary design. Umbrella closes away from you, thus keeping you dry when closing. Easier to close when entering or leaving a car or through a door.

**MSRP: \$49.95**



Nimble  
pen sold  
separately.



A



D

**A. CROSS® MEDIUM CLASSIC  
BLACK JOURNAL**  
334001

This stylish journal allows you to carry and display your Cross® Pen in style. Features a high-quality leatherette finish with an elastic closure and ribbon page marker. Inside, you'll find lightly lined, perforated pages for ease and flexibility in note taking, journaling, or sketching.

**Nimble pen sold separately.**  
**MSRP: \$39.95**



B

**B. CROSS® CLASSIC REFILLABLE  
NOTEBOOK BUNDLE SET**  
302444

Set includes Cross® Classic refillable notebook and Cross® Signature accessory pen. A modern evolution with detailed stitching, painted edge paper, pen loop and colour matching ribbon page markers. 100 sheets of cool grey lined paper. Includes business card pocket. Cross® premium gift box included.

**MSRP: \$59.95**

C



**C. BUSINESS CARD HOLDER**  
267524

Double-sided with two compartments for business cards.

**MSRP: \$19.95**

**D. MEDIUM BOHEMIAN JOURNAL**  
302456

Soft vinyl hard cover with a sewn book binding. Features a pocket on the inside back cover, matching satin ribbon bookmark, and elastic privacy closure. Includes 80 sheets of ruled wood free paper.

**MSRP: \$19.95**

# 40

## WRITING



### **CROSS® TECH3 LUSTROUS CHROME MULTIFUNCTION PEN**

334005

An effortless twist transforms this finely-crafted black ballpoint pen into a red editing pen, to a pencil, and back again. On the other end is a precision stylus to improve accuracy and ease when you interact with your favourite mobile device. However you choose to work and create, Tech3+ delivers on versatility, convenience, and style. Laser engraved.

**MSRP: \$72.95**





**A. CROSS® TECH 2 MULTI-FUNCTION PEN**

302475

Trim, classic design featuring a ballpoint pen and a narrow 6mm precision stylus. A smoother glide and increased accuracy will make bringing ideas to life feel effortless, whether on paper or your mobile screen.

**MSRP: \$49.95**

**B. CROSS® TRACKR COAL BLACK BALLPOINT PEN**

334006

Bold both in size and concept, this innovative pen will not go unnoticed. The tracking device inside offers a suite of features to ensure you never get separated from it (or your phone). It's a truly unique writing instrument to own or give as a gift.

**MSRP: \$123.50**

---

Whether it be on paper or mobile screen, leave an impression.

---

**C. SHEAFFER® CARBON FIBER BALLPOINT PEN**

334009

Sleek and streamlined design offered in contemporary finishes with a cool look.

**MSRP: \$72.95**



**D. CROSS® ATX BRUSHED BLACK BALLPOINT PEN**

334008

Streamlined from integrated clip to tapered tip, ATX delivers singular contemporary style in a chic, ergonomic package. A delicate balance of design, ingenuity, and practical sensibility that's often imitated, never duplicated. Comfortably tapered medium-diameter barrel. Unique integrated rounded clip. Comes with premium gift box.

**MSRP: \$85.95**

**E. NIMBLE 2-IN-1 BALL PEN**

334004

The Nimble is compact and features an ultra smooth ballpoint that allows for effortless writing while the stylus allows you to navigate your smartphone, tablet or any other touch-screen device with ease. The stylus is made of a conductive soft silicone rubber that conveys an electrical signal to the touch screen.

**MSRP: \$12.95**





# 42

---

## PERSONAL TOUCHES

---

### SWAROVSKI® CRYSTAL EARRING AND NECKLACE SET

333976

Elegantly designed with clear Swarovski® crystal, this matching earring and necklace set is perfect for any occasion. Packaged in a sleek black box perfect for gifting. Silver plated. Necklace ball 11mm, earrings 6.8MM)

**MSRP: \$169.95**

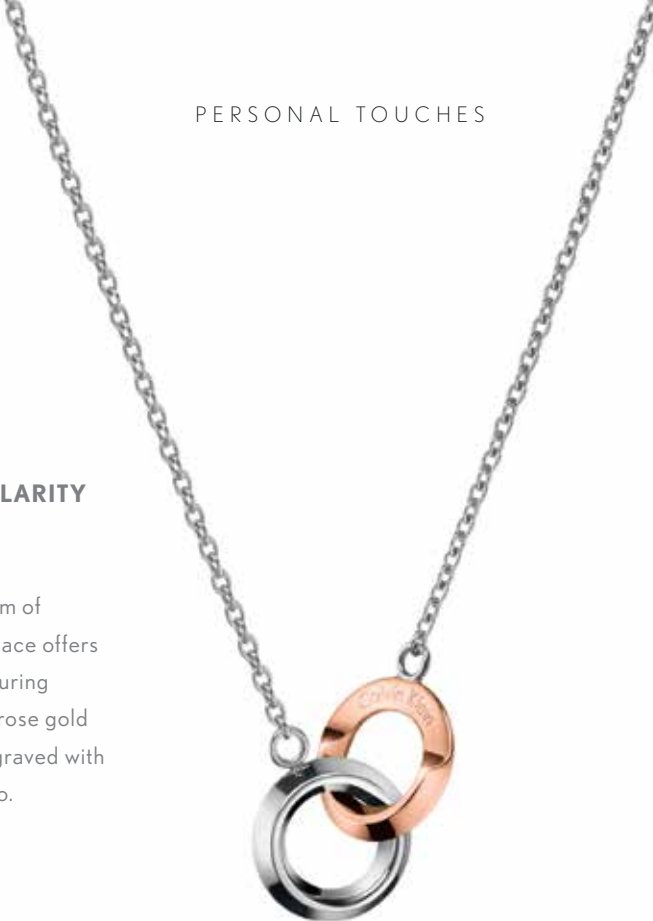
PERSONAL TOUCHES

**CALVIN KLEIN® CIRCULARITY  
NECKLACE**

302442

Playing on the rich symbolism of circularity, this refined necklace offers a clean and airy design. Featuring polished stainless steel and rose gold PVD surfaces delicately engraved with the iconic Calvin Klein® logo.

**MSRP: \$169.95**



**LEXUS CUFFLINKS**

206391

Custom stainless steel cufflinks accentuated with sophisticated black accents.

**MSRP: \$69.95**

**CUSTOM LEXUS LAPEL PIN**

156321

Classic sterling silver lapel pin is a subtle statement of Lexus pride and style.

**MSRP: \$29.95**



Note: These items are subject to change throughout the year based on availability.



START

FINISH





**THE DEFINITION OF  
AWE-INSPIRING PERFORMANCE.**

The first-ever Lexus LC 500.



46

---

L I F E S T Y L E

---

# EXPERIENCE ACOUSTIC EXCELLENCE

## VOLCANO WIRELESS STEREO EARBUDS

302577

Don't hassle with cords. These earbuds are equipped with a rubberized anti-tangle cord! Use the built-in microphone to answer and end your calls, and play/skip/pause songs or change the volume from a touch on the rubberized buttons.

**MSRP: \$69.95**



## IFIDELITY® METAL MILLENNIUM BLUETOOTH® SPEAKER

334000

This iFidelity® speaker delivers pristine streaming audio from Bluetooth® compatible devices like iPhone, iPad or Android. Play music, movies, and mobile audio as they were originally created in the studio, all within the palm of your hand. With the built-in microphone, the speaker allows you to conference call on-the-go through your smartphone or by video chat. Includes Micro USB to USB charging cable and 3.5mm aux cable. Playback time at maximum volume is 2 hours.

**MSRP: \$125.95**



## WATERPROOF OUTDOOR BLUETOOTH® SPEAKER

267579

Enjoy your favourite music regardless of your location. Take the outdoor speaker with you to the pool, on your hike, or to your next house party. The 6 Watt output and Digital Sound Processor is capable of filling any location with quality sound. Includes Micro USB Charging Cable. Bluetooth® working range is 10 meters.

**MSRP: \$75.95**



## BOSE® SOUNDLINK® BLUETOOTH® SPEAKER

288354

Engineered to deliver bold sound. From the pool to the park to the patio, its rugged, water-resistant design allows anyone to enjoy the music they love in more places. Up to 8 hours of playing time. Lexus logo on back.

**MSRP: \$219.95**



### COMMANDER POWERBANK

302574

With 4,000 mAh, the Commander unites power and portability and can recharge your electronic device through its single USB 1A output port. Perfect for on-the-go while attached to your phone with the included silicone smartphone strap.

**MSRP: \$39.95**



### WIRELESS CHARGING PHONE STAND

318260

Charge Qi enabled devices by placing compatible device on stand. Charge your smartphone on your table, desktop or nightstand. Features a Micro USB input (cord included), output: 5 volts/1 amp, indicator light, non-slip stand and base. Please note some computer and laptop USB ports may not supply enough power to charge a device using this charging pad. Compatible with most smartphone devices.

4.5" W x 3.5" H x 3.75" D

**MSRP: \$39.95**



**BRAKE DISC WALL CLOCK**

267573

13" diameter wall clock.

Construction details to an original racing brake disc. Aluminum rotor sheet with through-hole cross drilling. Wrench shaped sweeping hands.

**MSRP: \$73.95****MAGNETIC LED WORK LIGHT**

302587

36 LED filled work light and a .5 watt flashlight on the top of the piece.

Includes a 7 position magnetic pivot stand, a pivoting hook, and a non-slip grip. Great for in the garage or in the car and very useful in emergency situations. Includes three AA batteries.

**MSRP: \$32.50****SAFETY 3-IN-1 ESCAPE TOOL**

302579

Three-in-one emergency safety tool includes hammer to break through glass, seatbelt cutter and dynamo flashlight. Crank handle to generate power. No external batteries needed. Rubber handle for easy gripping.

**MSRP: \$17.95**

**LAGUIOLE® BLACK KNIFE SET**

302590

This six-piece black knife set is sure to demand notice on any tabletop. The famous Laguiole® bee decorates each handle in honour of the centuries-old craftsmanship made famous by Laguiole® knife makers. Includes convenient case for presentation and storage.

**MSRP: \$99.95****4PC. ESPRESSO MUG GIFT SET**

288323

Classic set that comes with four different styles of espresso mugs.

**MSRP: \$59.95****GRILL MASTER SET**

302604

This 13-piece BBQ set includes everything needed to be king or queen of the backyard grill – spatula, tongs, knife, fork, four skewers, and four corn holders, all in an aluminum case. Lexus logo on top of case.

**MSRP: \$69.95**



### LAMBSWOOL THROW

227615

Features micro fur on one side while the other has the coziness of faux lambswool. Machine washable. 100% polyester. Packaged in vinyl zipper bags. Dimensions: 50" x 50"

**MSRP: \$59.95**



### LUIGI BORMIOLI SET

318256

Made of European crystal, the set includes: 1 carafe (34 oz.) and 4 glasses (15 oz). Comes in a gift box.

**MSRP: \$89.95**



### TWO TIER INSULATED OVAL FOOD CONTAINER

316785

This insulated food container with folding handles allows you to carry it like a classic lunch box. Two tiers enable you to keep food separated. The inside layer is stainless steel while the outer layer is plastic enabling food to stay warm or cold longer. FDA Compliant and BPA free.

Dimensions: 3.9" W x 7.87" H x 5.75" D

**MSRP: \$29.95**

### ENTERTAINER WINE & CHEESE BOARD

316787

All you need for serving and indulging is the finest wines and most flavourful hors d'oeuvres. 7-Piece set includes solid wood cutting board, ceramic tapas dish, waiter corkscrew, bottle stopper, drip ring and two ceramic handle cheese knives. Cutting board features area to keep tapas dish and corkscrew in place and an attached accessory block with magnets for storing pieces.

Dimensions: 11.7" W x 3.2" H x 9" D

**MSRP: \$74.95**



# LEXUS STYLE, FOR OUR FOUR-LEGGED FRIENDS



### PET COLLAR

333982

As comfortable as your Lexus, your pet will love this stylish woven collar. Metal d-ring and black plastic detachable buckle . Measures 1".

**MSRP: \$12.95**



### LED CLIP-ON PET SAFETY LIGHT

333981

Keep pets safe on night-time walks! LED light clips on easily to collars or leashes with sturdy spring clip. Features three modes (solid, fast flashing, slow flashing) and takes one replacement button cell battery (included).

**MSRP: \$6.95**

### COLLAPSIBLE SILICONE PET BOWL WITH CARABINER

333978

Compact silicone collapsible pet bowl with metal carabiner easily attaches to bags, belt loops, or leashes. Designed for food and water. 12 OZ. capacity.

**MSRP: \$9.95**







54

YOUTH

### CHILDREN'S LAMBSWOOL BLANKET

267591 Pink

267592 Blue

Both luxurious and warm, this incredibly comfortable, reversible plush throw features micro fleece on one side while the other has the coziness of faux lambswool.

30" x 45"

**MSRP: \$39.95**



### LEXUS SOFT PLUSH HIPPO BUNDLE (SET OF TWO)

302616

Makes for a great companion in the car, on airplanes or even at home. Available in two sizes: 16" and 12".

**MSRP: \$39.95**



### PEPE - PANDA BEAR 16"

333986

Soft and huggable panda bear.  
The perfect toy for kids. Measures 16".

**MSRP: \$29.95**





DED  
PER

FOR

MANCIE



# THE MARKS OF HIGH PERFORMANCE

## CRAFTED TO THE EXTREME

Incomparable performance cars cannot be rushed. They must be painstakingly crafted out of titanium, aluminum and high-tensile steel. Hand-built by masters. Scrutinized by experts. And tested—relentlessly.







LEXUS

A

60

PERFORMANCE ZONE



**A. MEN'S STORMTECH® OCTANE  
LIGHTWEIGHT SHELL**

333931

Lightweight, great looking and versatile track jacket featuring durable water resistant technology. *F SPORT* logo on back neck.

M - 2XL

**MSRP: \$79.95**

**B. MEN'S STORMTECH®  
SIDEWINDER SHELL**

333935

Four-way stretch fabric that moves as you move. A simple design and classic look that includes a zippered exterior chest pocket and an attached hood for protection and warmth in cool to moderate weather conditions. Lexus horizontal logo on back of nape in silver.

M - 2XL

**MSRP: \$149.95**

**C. F SPORT FERST-DRY™  
WITH LASER MESH CAP**

335357

Ferst-Dry™ features moisture wicking and UV protection. Structured cap with laser mesh side and back panels.

S/M L/XL

**MSRP: \$29.95**

**D. MEN'S LACOSTE® FULL ZIP  
FLEECE SWEATSHIRT**

302215

This sweatshirt is lined with fleece to ward off the chill. Finished with classic details like stand-up collar, zip front, and zip pockets. 83% cotton, 17% polyester. F badge on back neck.

M - 2XL

**MSRP: \$199.95**

# INSPIRED BY ADVENTURE



## MAUI JIM® GUARDRAILS SUNGLASSES 291968

The Guardrails sunglasses are designed for people who demand a durable, comfortable, high-performance sunglass. Maui Evolution lenses combine the best properties of glass and polycarbonate in a lightweight crystal-clear scratch and impact resistant lens. Lexus logo on glasses case.

**MSRP: \$399.95**



## TUMI® ALPHA 2 INTERNATIONAL 2 WHEELED EXPANDABLE CARRY-ON

302572

This compact and expandable 2-wheel carry-on is ideal for everything from quick weekend getaways to international travel. Zipper expansion allows for up to 2" (5 cm) additional space in the main compartment. Built-in suit sleeve ensures clothing stays wrinkle free. Made from TUMI® patented ultra-durable FXT® ballistic nylon. Dimensions: 14" W x 22" L x 9" H \*

**MSRP: \$799.95**



\*Models subject to change throughout the year based on availability.



**A. CUSTOM F KEYCHAIN**

267516

This is the perfect accessory for your Lexus performance vehicle.

**MSRP: \$12.95**

**B. CUSTOM F SPORT KEYCHAIN**

267517

This is the perfect accessory for your Lexus performance vehicle.

**MSRP: \$12.95**

**C. CROSS® X COBALT BLUE ROLLERBALL PEN**

334007

The bold profile and striking design is matched only by the powerful performance that happens when Cross® X hits paper. Comes with premium gift box.

**MSRP: \$67.95**

**D. CROSS® STRATFORD CHROME PEN**

302477

This well-appointed chrome pen features a seamless design that is cutting edge in both sophistication and elegance.

**MSRP: \$49.95**

**E. CUSTOM F CROSS® ATX PEN**

267542

Swivel action, medium ballpoint pen. Comes with specially formulated ink that flows for a superior writing experience.

**MSRP: \$99.95**





# YOUR FAVOURITE MUSIC. YOUR FAVOURITE BEVERAGE... ALL IN ONE!



## **25 OZ. TRITAN™ AUDIO BOTTLE**

316784

Connect wirelessly to any Bluetooth® enabled audio device. It supports conference calls as well for easy, hands-free operation. Bottle is made of durable Tritan™ material which is shatter, stain, and odour resistant. Perfect opening for ice cubes and easy cleaning and comes with screw-on lid with a built-in, light-up, Bluetooth® speaker complete with flashing LED lights. Bluetooth® working range is 10 meters (33 feet). Hand wash is recommended.

**MSRP: \$45.50**



**ARCTIC ZONE® TITAN THERMAL TUMBLER - 20 OZ.**

334227

Do not miss the most trendy tumbler of the year. Double-wall 18/8 grade stainless steel vacuum construction with copper insulation, which allows your beverage to stay cold for 24 hours and hot for 8 hours. The construction also prevents condensation on the outside of the tumbler. Easy sipping, push-on lid with slide closure. Wide opening for comfortable filling and pouring.

**MSRP: \$33.95**



**AVIANA™ VACUUM BOTTLE - 20OZ.**

288337

Double wall stainless vacuum insulated bottle keeps your beverages colder longer. Leak-proof lid with extra-large opening to easily add ice to your beverage. Keeps beverages cold for 18 hours and hot for 6 hours.

**MSRP: \$45.95**



**HUGO VACUUM INSULATED BOTTLE - 18 OZ.**

333964

Double-wall construction, vacuum insulated. Keeps drinks hot for 5 hours and cold for 15 hours. Leak-proof locking cap.

**MSRP: \$24.95**

**ARCTIC ZONE® TITAN THERMAL HP® COPPER BOTTLE - 20 OZ.**

334228

Durable, powder spray colour. Double-wall 18/8 grade stainless steel vacuum construction with copper insulation, which allows your beverage to stay cold for 24 hours and hot for 8 hours. The construction also prevents condensation on the outside of the tumbler. Easy sipping, push-on lid with slide closure. Wide opening for comfortable filling and pouring.

**MSRP: \$35.00**





### MEN'S TAG HEUER® CARRERA WATCH

231069

The classic yet contemporary sports watch inspired by Motor Racing. Features special luminescent hands and markers for excellent readability in the dark or under water. Water resistant to 100M. 43MM. F badge logo on clasp.

Please allow 4-6 weeks for delivery.\*

**MSRP: \$5,650.00**



### MOVADO® GENTS WATCH

333958

Movado® Bold watch, 42 mm black. TR90 composite material and stainless steel case. The black dial features cobalt blue sunray dot and hands, rustic black leather strap with black tack-stitch detail, and black ion-plated stainless steel tongue buckle. Specially designed with K1 crystal, Swiss quartz movement, and is water resistant to 30 meters.

*F SPORT* and Lexus logos on box.

Please allow 4-6 weeks for delivery.\*

**MSRP: \$579.95**

\* All watch models are subject to change throughout the year based on availability.

## **BRITISH COLUMBIA**

Open Road Lexus Richmond, BC (604) 273-5533  
Jim Pattison Lexus Victoria, BC (250) 386-3516  
Regency Lexus Vancouver, BC (604) 739-1212  
Jim Pattison Lexus Northshore North Vancouver, BC  
(604) 982-0033  
Open Road Lexus Port Moody, BC (604) 461-7623  
Lexus of Kelowna Kelowna, BC (250) 448-0990

## **ALBERTA**

Lexus of Calgary Calgary, AB (403) 225-3987  
Lexus of Edmonton Edmonton, AB (780) 466-8300  
Lexus South Pointe Edmonton, AB (780) 989-2222  
Lexus of Royal Oak Calgary, AB (403) 296-9600

## **SASKATCHEWAN**

Ens Lexus Saskatoon, SK (306) 653-6777  
Taylor Lexus Regina, SK (306) 569-8777

## **MANITOBA**

Birchwood Lexus Winnipeg, MB (204) 889-3700

## **ONTARIO**

Performance Lexus St. Catharines, ON (905) 934-3336  
Ken Shaw Lexus Toronto, ON (416) 766-1155  
Lexus Downtown Toronto, ON (416) 603-9100  
Tony Graham Lexus Ottawa, ON (613) 225-2223  
Lexus of London London, ON (519) 680-1900  
Heffner Lexus Kitchener, ON (519) 748-9668  
Lexus on the Park Toronto, ON (416) 391-1600  
Bel-Air Lexus Ottawa, ON (613) 741-3270  
Lexus of Oakville Oakville, ON (905) 847-8400  
Northwest Lexus Brampton, ON (905) 494-1000  
Lexus of Richmond Hill Richmond Hill, ON (905) 883-8812  
Lexus of Windsor Windsor, ON (519) 979-1900  
Erin Park Lexus Mississauga, ON (905) 828-7727  
Don Valley North Lexus Markham, ON (905) 475-1625  
Lexus of Barrie, Barrie ON (705) 722-7955  
Lexus of Kingston, Kingston ON (613) 634-5555  
Lexus of Lakeridge, Ajax ON (905) 619-7166

## **QUÉBEC**

Spinelli Lexus Lachine, QC (514) 634-7171  
Spinelli Lexus Pointe-Claire Pointe-Claire, QC (514) 694-0771  
Lexus Laval Laval, QC (450) 686-2710  
Boulevard Lexus Quebec, QC (418) 681-2121  
Lexus Gabriel Brossard Brossard, QC (450) 923-7777  
Lexus Gabriel St.-Laurent, St.-Laurent QC (514) 747-7777  
Park Avenue Lexus Sainte-Julie Ste-Julie, QC (450) 922-1833

## **NOVA SCOTIA**

O'Regan's Lexus Halifax, NS (902) 453-2331

## **NEW BRUNSWICK**

Lexus of St-John St-John, NB (506) 642-5398



[www.lexus.ca](http://www.lexus.ca) 1-800-26-LEXUS  
Lexus, One Toyota Place, Toronto, Ontario M1H 1H9

All illustrations and specifications contained in this brochure are based on the latest product information available at time of publication. Lexus Canada reserves the right to make any changes at any time, without notice, in colours, materials, specifications and pricing. Any variations in colours shown are due to the reproduction variations in the printing process.  
Printed in Canada. Printed on recycled paper.